



#filmlosalamos

Scene It in the *Movies*



LOS ALAMOS LOCATION SERVICES

The Los Alamos Film Liaison provides film and television production support, including location scouting, resource referrals, liaison support between local public safety officials and production crews, and other services to facilitate the cost-effective and efficient operations required by the industry. The Film Liaison also works closely with the State Film Office and regional film advocacy initiatives to promote filming in Northern New Mexico locations.



LOS ALAMOS
where discoveries are made

LOS ALAMOS COUNTY FILM OFFICE

Ellyn Felton
505-662-8087
ellyn.felton@lacnm.us

Los Alamos, New Mexico





in the *Movies*

LOS ALAMOS ON THE BIG SCREEN:

Over the years Los Alamos County has served as the background for a variety of movies and TV shows. Whether it's Sci-Fi, Drama, Crime, or a Musical, the county offers a variety of filming locations for well-developed or budding directors and producers.

For a list of film locations in Los Alamos County visit <https://nm.location.pro/#/dashboard/locations>.



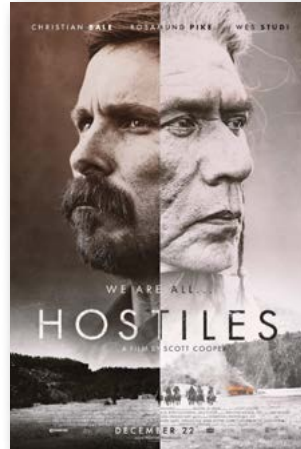
MYSTERIES AT THE MUSEUM
2018

Travel Channel Series
Host: Don Wildman



ONLY THE BRAVE
2017

Josh Brolin
Miles Teller
Jeff Bridges
Jennifer Connelly
Taylor Kitsch



HOSTILES
2017

Christian Bale
Rosamund Pike
Wes Studi



GODLESS
2017

Netflix Limited Series
Jack O'Connell
Michelle Dockery
Jeff Daniels



THE BRAVE
2017

NBC Television Series
Anne Heche



LONGMIRE
2017

Neflix Series
Robert Taylor
Katee Sackhoff
Lou Diamond Phillips



NEW YORK PRISON BREAK

The Seduction of Joyce Mitchell
2017
Lifetime Movie
Penelope Ann Miller
Joe Anderson



MANHATTAN
2014-2015

TV Series
Rachel Brosnahan
Michael Chernus
Christopher Denham
Katja Herbers



Award Winning
OPPENHEIMER
2023

Cillian Murphy
Emily Blunt
Matt Damon
Robert Downey Jr.

Written and directed by Christopher Nolan, *Oppenheimer* is an epic thriller that thrusts audiences into the pulse-pounding paradox of the enigmatic man who must risk destroying the world in order to save it.



THE LONE RANGER
2013

Johnny Depp
Armie Hammer



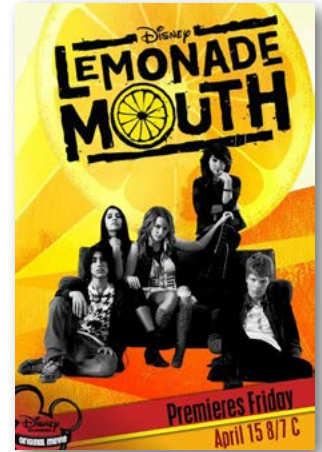
TIGER EYES
2012

Willa Holland
Amy Jo Johnson
Cynthia Stevenson



HAYWIRE
2011

Gina Carano
Ewan McGregor
Bill Paxton
Michael Fassbender



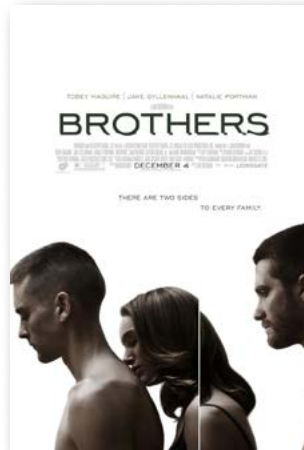
LEMONADE MOUTH
2011

Bridget Mendler
Adam Hicks
Hayley Kiyoko



LET ME IN
2010

Chloe Grace Moretz
Kodi Smit-McPhee
Richard Jenkens



BROTHERS
2009

Natalie Portman
Jake Gyllenhaal
Tobey Maguire



DID YOU HEAR ABOUT THE MORGANS?
2009

Sarah Jessica Parker
Hugh Grant



THE MISSING
2003

Tommy Lee Jones
Cate Blanchett
Evan Rachel Wood



Welcome to

Los Alamos

#FILMLOSALAMOS

Los Alamos, New Mexico, is a mountain town located just 36 miles northwest of Santa Fe. Home to Los Alamos National Laboratory, the incorporated city and county was developed during World War II at the foot of the Jemez Mountains for the Manhattan Project. Los Alamos offers unique landscapes, seasonal weather, and housing stock that provide the locations film makers are seeking.

On film, Los Alamos landscapes and structures have served as upstate New York (*Haywire* and *New York Prison Break*, *The Seduction of Joyce Mitchell*), northern California (*Brothers*), Wyoming (*Longmire*, *Did You Hear About the Morgans?*), the Montana/Canada border (*Hellbent*), Arizona (*Only the Brave*), the "wild west" (*Godless*, *Hostiles*, *The Lone Ranger*, *The Missing*) and even Mongolia, China (*The Brave*). Los Alamos has also played itself in the films *Let Me In*, *Tiger Eyes*, the Travel Channel series *Mysteries at the Museum*, and recently acclaimed *Oppenheimer* written and directed by Christopher Nolan.

These film friendly locations are also some of Los Alamos' most scenic recreational assets!

PAJARITO MOUNTAIN skipajarito.com

Ski, hike, and bike this all season mountain and enjoy bands and brews at the lodge!

SCENE IT: *Godless*, *Hostiles*, *Let Me In*, *Longmire*, *Only the Brave*, *The Brave*, *The Lone Ranger*

GATEWAY TO THREE NATIONAL PARKS:

VALLES CALDERA NATIONAL PRESERVE

nps.gov/valle

Play on a supervolcano with a Valle Grande (big valley) offering biking, hiking, cross-country skiing, sleigh rides, nature watching and more, depending on the season.

SCENE IT: *Longmire*, *The Lone Ranger*, *The Missing*

BANDELIER NATIONAL MONUMENT nps.gov/band

Walk in the footsteps of Ancestral Puebloans, on trails and up ladders to cave dwellings.

MANHATTAN PROJECT NATIONAL HISTORICAL PARK

nps.gov/mapr

Learn about life in the "secret city" during World War II by visiting the Bradbury Science Museum, the Los Alamos History Museum, the Los Alamos Nature Center, Historic Fuller Lodge, and Ashley Pond Park!

SCENE IT: *Oppenheimer*, *Brothers*, and *Lemonade Mouth*

Go to VISITLOSALAMOS.ORG for a full list of attractions, itineraries, and hospitality services!